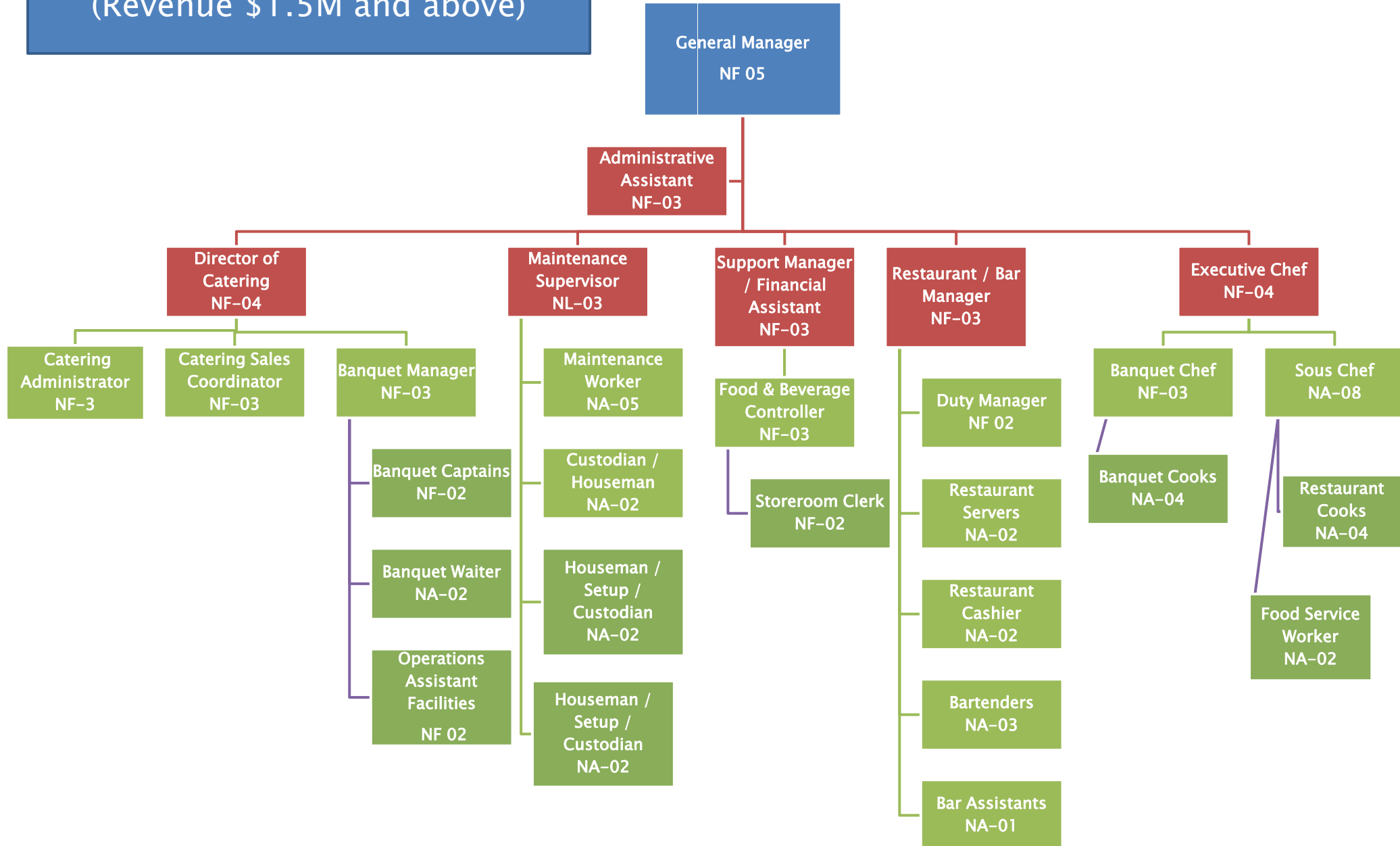


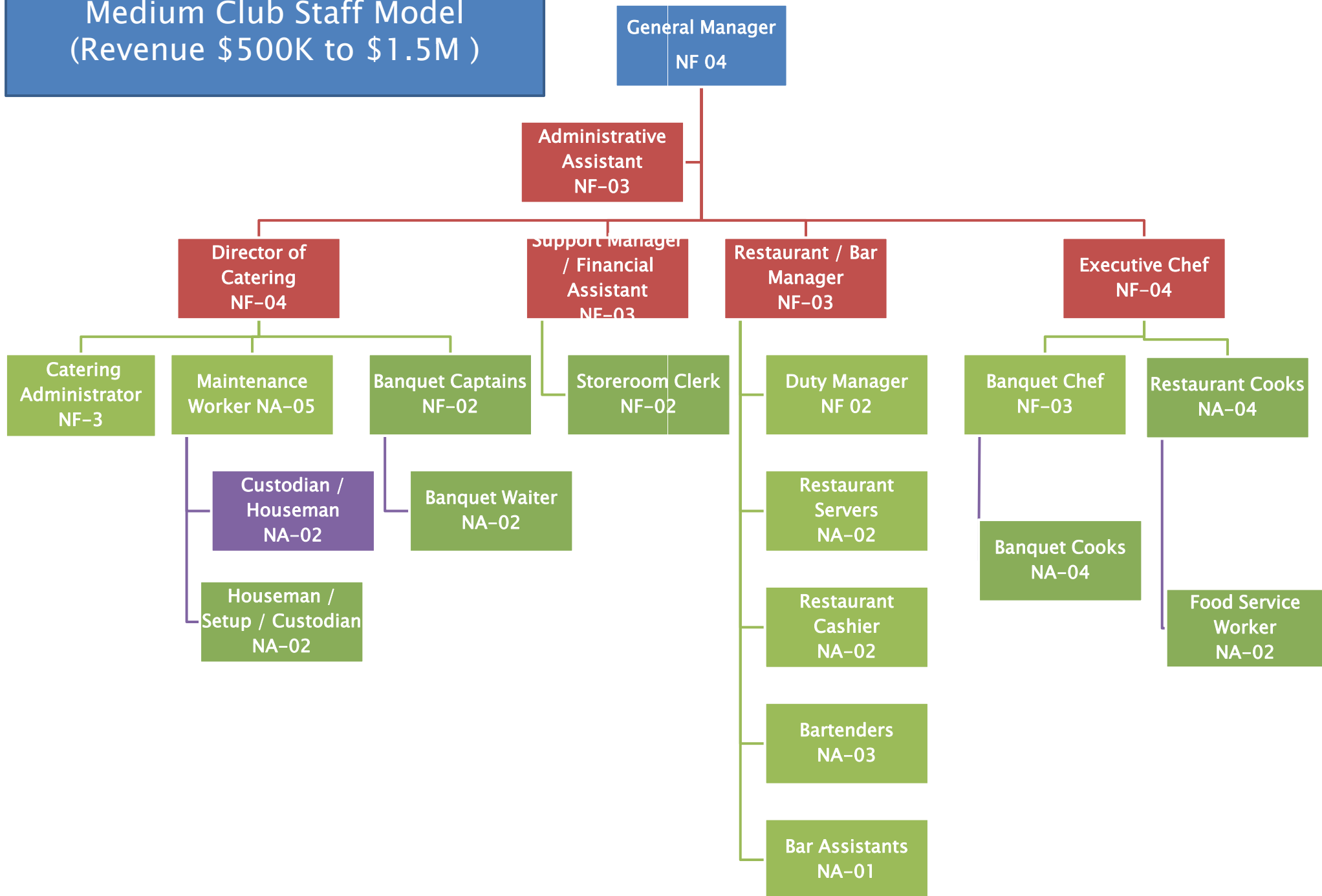
CLUB ORGANIZATIONAL STRUCTURE

- The following are the guidelines to determine proper organizational chart needed to staff a particular size club.
 - Large Club = \$1.5M and above
 - Medium Club = \$500K to \$1.5M
 - Small Club = \$500K and below
- Sizes based on Annual Total Revenue

Large Club Staff Model (Revenue \$1.5M and above)



Medium Club Staff Model (Revenue \$500K to \$1.5M)



Small Club Staff Model
(Revenue \$500K and below)

General Manager
NF 04

Administrative
Assistant
NF-02

Catering Manager
NF-03

Support Manager /
Financial Assistant
NF-03

Duty Manager
NF- 02

Executive Chef
NF-03

Custodian /
Houseman
NA-02

Banquet Captains
NF-02

Storeroom Clerk
NF-02

Restaurant Servers
NA-02

Lead Cook
NA-04

Houseman / Setup /
Custodian
NA-02

Banquet Waiter
NA-01

Restaurant Cashier
NA-02

Cooks
NA-03

Bartenders
NA-03

Food Service Worker
NA-02

Bar Assistants
NA-01